

1999 Toyota RAV4

1999-2000 SUSPENSION Front - Avalon, Camry, Camry Solara, Celica, Corolla, Echo, RAV4 & Sienna

1999-2000 SUSPENSION

Front - Avalon, Camry, Camry Solara, Celica, Corolla, Echo, RAV4 & Sienna

DESCRIPTION

Vehicles are equipped with front wheel drive and independent MacPherson strut (shock absorber) front suspension. RAV4 can also be equipped with all wheel drive. Suspension consists of vertically mounted strut assemblies, control arms, and stabilizer bar. Shock absorbers are mounted between inner fender and steering knuckle. Tie rod ends connect rack and pinion steering to steering knuckle. Ball joint connects steering knuckle to lower control arm. On some models, a suspension crossmember is used. A stabilizer bar attaches to lower control arms.

ADJUSTMENTS & INSPECTION

WHEEL ALIGNMENT SPECIFICATIONS & PROCEDURES

NOTE: See SPECIFICATIONS & PROCEDURES article in WHEEL ALIGNMENT.

BALL JOINT CHECKING

NOTE: Ball joint must be removed for the following checking procedure. See LOWER CONTROL ARM and BALL JOINTS under REMOVAL & INSTALLATION.

Remove ball joint and place in vise, with ball joint stud pointing upward. Flip stud back and forth about 5 times. Reinstall the ball joint nut. Place torque wrench on ball joint nut and turn nut continuously 1 turn every 2 to 4 seconds. Read torque measurement on 5th turn. See BALL JOINT TURNING TORQUE SPECIFICATIONS table. If torque is not within specification, replace ball joint.

BALL JOINT TURNING TORQUE SPECIFICATIONS

Application	INCH Lbs. (N.m)
Avalon, Camry, Camry Solara & Sienna	8.7-30 (1-3.4)
Celica	
1999	8.7-26 (1-2.9)
2000	8.7-43 (1-4.0)
Corolla	8.7-26 (1-2.9)
Echo	5.2-30 (.59-3.4)
RAV4	13-43 (1.5-5.0)

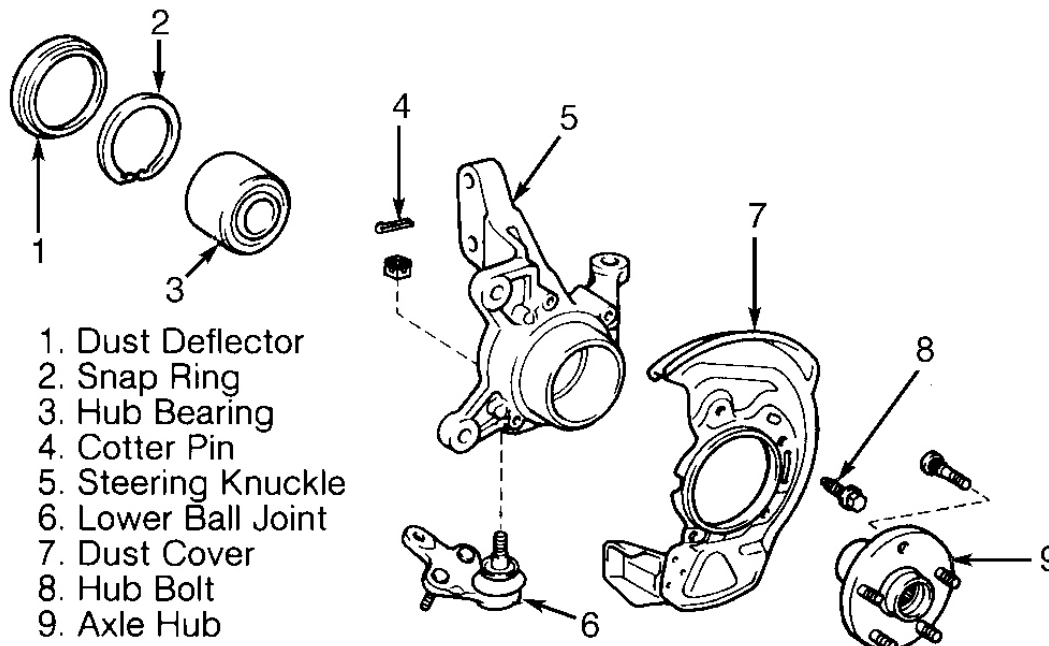
WHEEL BEARING CHECKING

NOTE: Wheel bearings are not adjustable. Whenever bearings are removed, replace with **NEW** bearings, races and oil seals.

1999 Toyota RAV4

1999-2000 SUSPENSION Front - Avalon, Camry, Camry Solara, Celica, Corolla, Echo, RAV4 & Sienna

1. Remove front wheel. Remove brake caliper and disc. Support caliper out of way. Using dial indicator placed near center of axle hub, check backlash by moving hub in bearing shaft direction. If backlash exceeds .002" (.05 mm), replace bearing.
2. Check deviation at axle hub surface, outside of hub bolt by moving hub with twisting motion. If deviation is more than .002" (.05 mm), replace bearing. Reinstall disc, brake caliper and front wheel. See **Fig. 1** and **Fig. 2**.

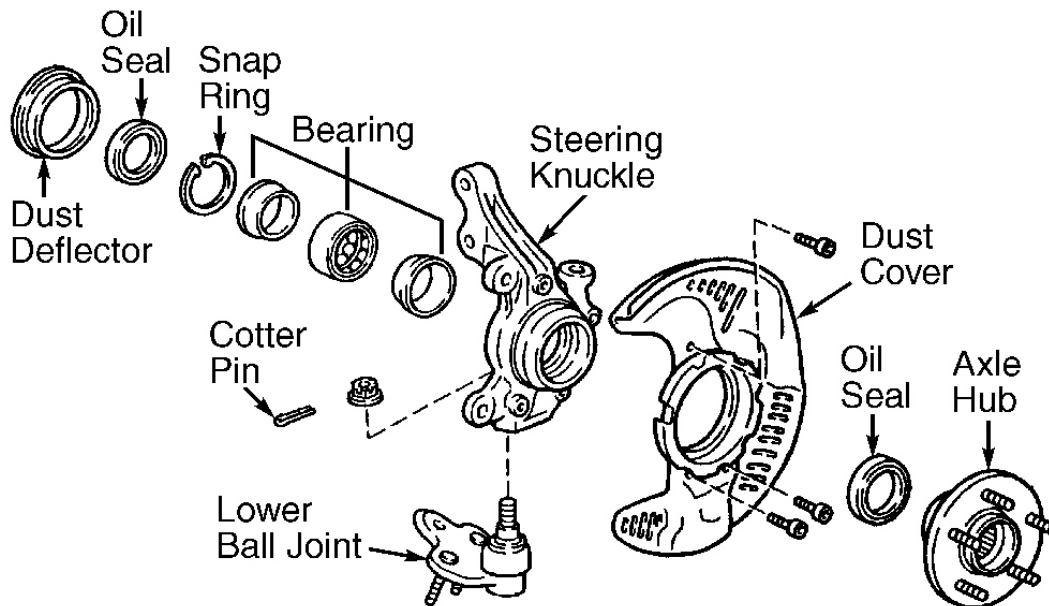


G93J02536

Fig. 1: Identifying Hub Components (Camry Shown; Avalon, Camry Solara, Echo & Sienna Similar)
Courtesy of TOYOTA MOTOR SALES, U.S.A., INC.

1999 Toyota RAV4

1999-2000 SUSPENSION Front - Avalon, Camry, Camry Solara, Celica, Corolla, Echo, RAV4 & Sienna



G00006667

Fig. 2: Identifying Hub Components (Corolla Shown; Celica & RAV4 Similar)

Courtesy of TOYOTA MOTOR SALES, U.S.A., INC.

REMOVAL & INSTALLATION

FRONT AXLE HUB & WHEEL BEARING

Removal (Avalon, Camry, Camry Solara & Sienna)

1. Remove front wheel. Check wheel bearing backlash and deviation (rotational free play). See **WHEEL BEARING CHECKING** under ADJUSTMENTS & INSPECTION.
2. Remove cotter pin and lock nut cap. Hold drive shaft from turning by applying brakes and remove drive shaft lock nut. Remove brake caliper and disc and support calliper out of way.
3. Remove ABS speed sensor and wire harness clamp. Loosen 2 nuts on lower end of shock absorber (DO NOT remove nuts).
4. Remove cotter pin and nut from tie rod end. Use tie rod separator to disconnect tie rod end from steering knuckle. Remove 2 nuts and 1 bolt and disconnect lower ball joint from lower control arm. See **Fig. 1** and **Fig. 3**.
5. Remove 2 nuts and bolts from lower end of shock absorber. Remove steering knuckle and axle hub from vehicle.
6. Carefully pry off dust deflector. Mount assembly in vise and use separator tool to remove lower ball joint from hub assembly. Use a slide hammer and attaching plate to remove axle hub.
7. Place axle hub on press and use appropriate support plates to press inner bearing race from axle hub.

1999 Toyota RAV4

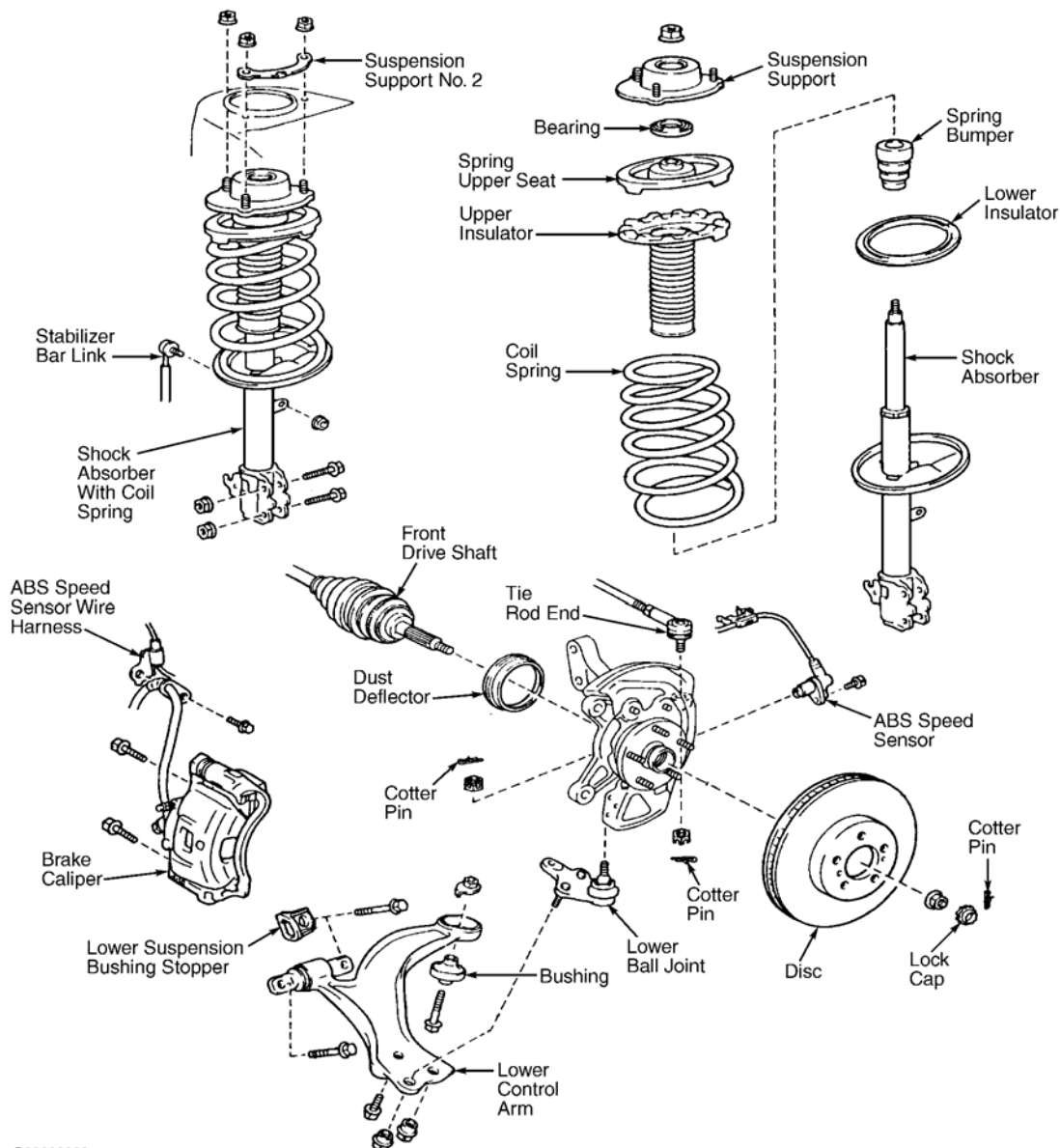
1999-2000 SUSPENSION Front - Avalon, Camry, Camry Solara, Celica, Corolla, Echo, RAV4 & Sienna

Remove 4 Torx bolts and remove dust cover.

8. Remove wheel bearing snap ring. Place inner race against outside of bearing and press wheel bearing from axle hub. See **Fig. 1**.

Installation

To install, reverse removal procedure. Use NEW snap ring after pressing in NEW wheel bearing. Use NEW cotter pins. Tighten bolts to specifications. See **TORQUE SPECIFICATIONS**.



G00006666

Fig. 3: Exploded View Of Front Suspension Components (Avalon, Camry, Camry Solara & Sienna)
Courtesy of TOYOTA MOTOR SALES, U.S.A., INC.

1999 Toyota RAV4

1999-2000 SUSPENSION Front - Avalon, Camry, Camry Solara, Celica, Corolla, Echo, RAV4 & Sienna

Removal (Celica, Corolla & RAV4)

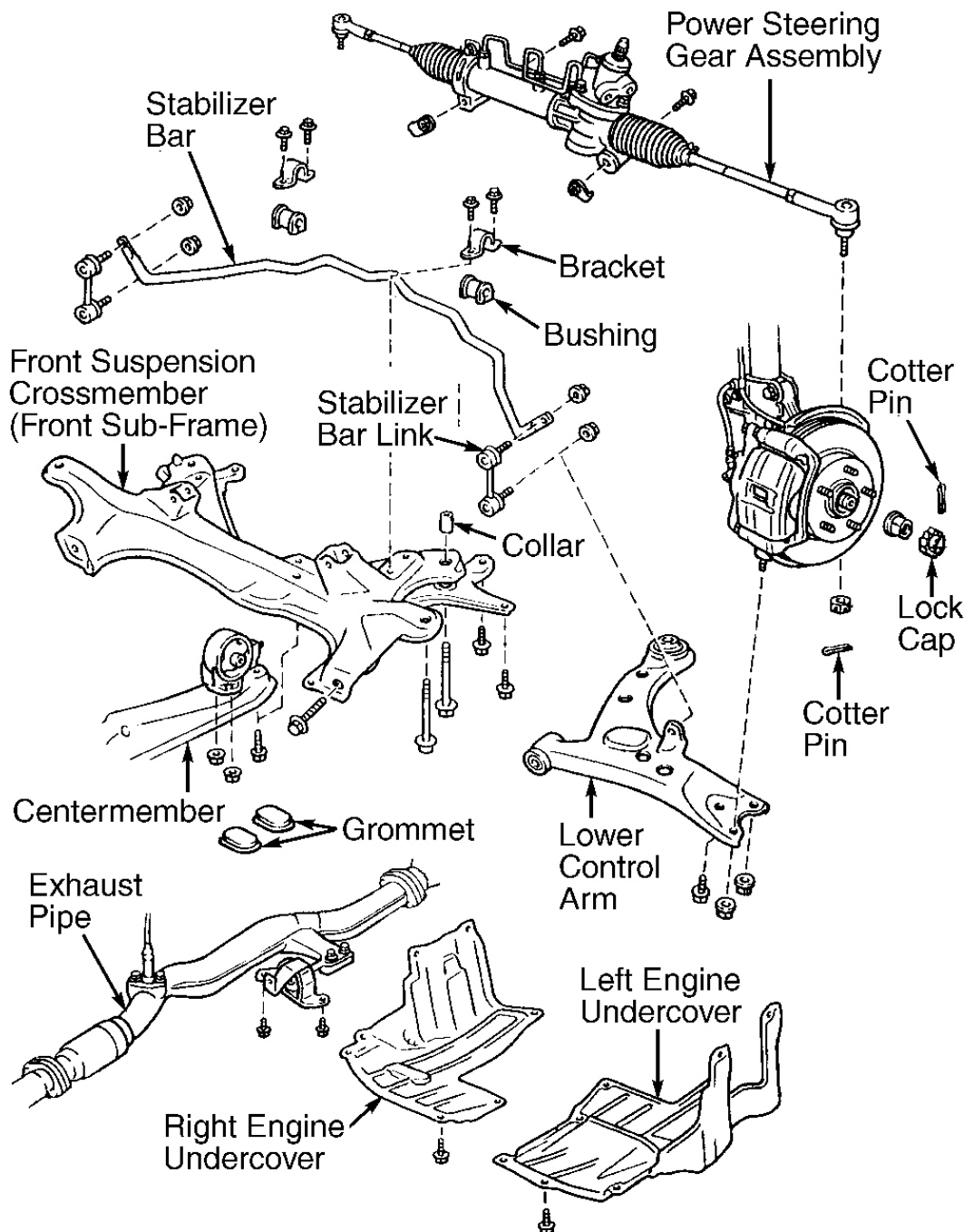
1. Remove front wheel. On Celica, remove ABS speed sensor. Check wheel bearing backlash and deviation (rotational free play). See **WHEEL BEARING CHECKING** under ADJUSTMENTS & INSPECTION.
2. Remove cotter pin and lock nut cap. Hold drive shaft from turning by applying brakes and remove drive shaft lock nut. Remove brake caliper and disc and support caliper out of way.
3. On Corolla and RAV4 with ABS, remove ABS speed sensor and wire harness clamp. On Corolla, remove brake hose from shock absorber clamp. Loosen 2 nuts on lower end of shock absorber (DO NOT remove).
4. On all models, remove cotter pin and nut from tie rod end. Use separator tool to disconnect tie rod end from steering knuckle. On Celica, disconnect stabilizer bar link from lower control arm.
5. On all models, remove 2 nuts and 1 bolt and disconnect lower ball joint from lower control arm. Remove 2 nuts and bolts from lower end of shock absorber. Remove steering knuckle and axle hub from vehicle. See **Fig. 2** .
6. Mount assembly in vise. Carefully pry dust deflector from hub. Remove cotter pin and nut, and use separator tool to remove lower ball joint from hub assembly. On Celica and Corolla, remove inner oil seal from hub. On Corolla, remove inner snap ring.
7. On all models, use slide hammer and attaching plate to remove axle hub. Place axle hub on press and use appropriate support plates to press inner bearing race from axle hub. Remove Torx bolts and remove dust cover.
8. On Celica and Corolla, use a suitable extractor to remove outer oil seal from hub. On RAV4, use a suitable extractor to remove inner and outer oil seals from hub. On all models, remove wheel bearing snap ring, if equipped. Place inner race against outside of bearing and press wheel bearing from axle hub. See **Fig. 2** .

Installation

To install, reverse removal procedure. Use NEW snap ring after pressing in NEW wheel bearing. Use NEW cotter pins. Tighten bolts to specifications. See **TORQUE SPECIFICATIONS** .

1999 Toyota RAV4

1999-2000 SUSPENSION Front - Avalon, Camry, Camry Solara, Celica, Corolla, Echo, RAV4 & Sienna

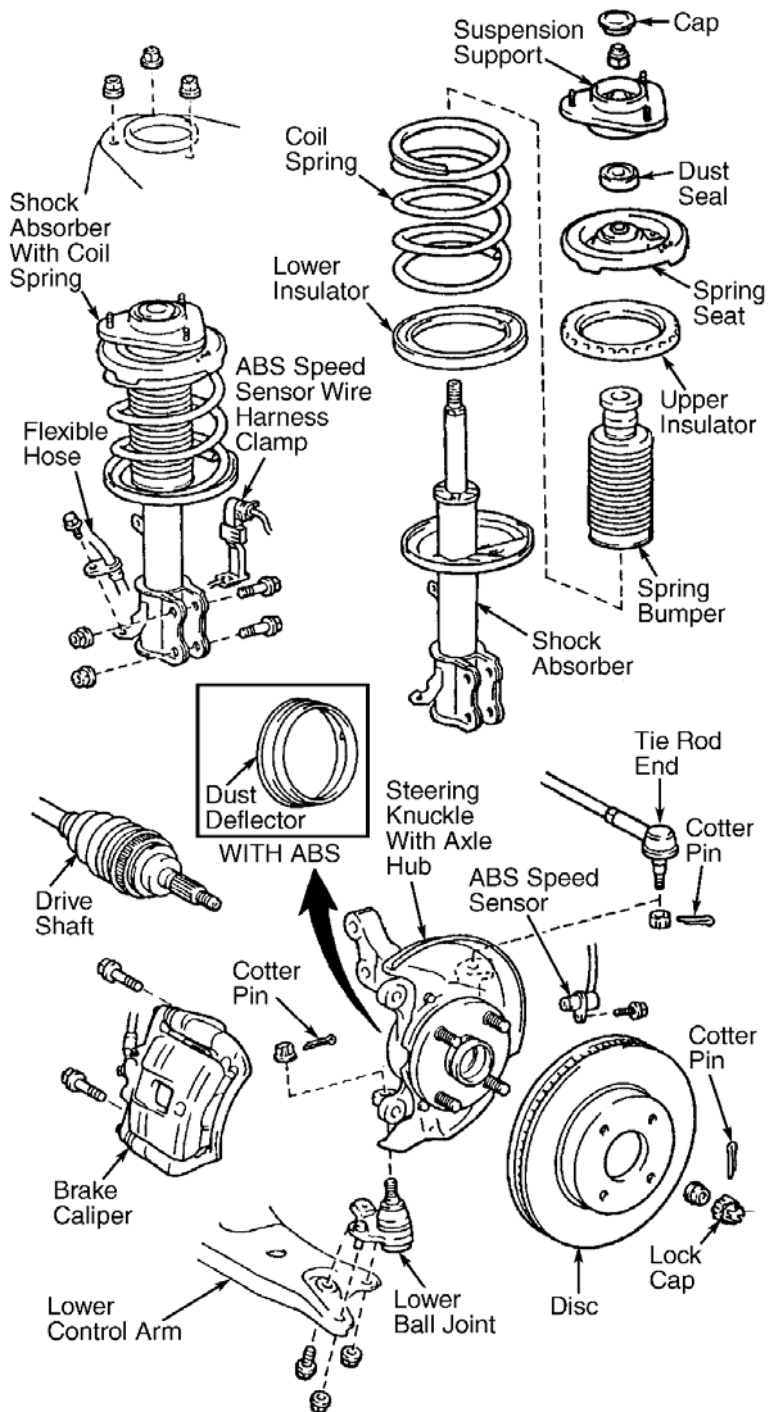


G00006668

Fig. 4: Exploded View Of Front Suspension Components (Celica)
Courtesy of TOYOTA MOTOR SALES, U.S.A., INC.

1999 Toyota RAV4

1999-2000 SUSPENSION Front - Avalon, Camry, Camry Solara, Celica, Corolla, Echo, RAV4 & Sienna



G00006670

Fig. 5: Exploded View Of Front Suspension Components (Corolla)
Courtesy of TOYOTA MOTOR SALES, U.S.A., INC.

Removal (Echo)

1999 Toyota RAV4

1999-2000 SUSPENSION Front - Avalon, Camry, Camry Solara, Celica, Corolla, Echo, RAV4 & Sienna

1. Remove front wheel. Check wheel bearing backlash and deviation (rotational free play). See **WHEEL BEARING CHECKING** under ADJUSTMENTS & INSPECTION.
2. Using punch and hammer, unstake drive shaft lock nut. Apply brakes and remove lock nut. Remove 2 bolts, brake caliper and disc. Support brake caliper out of way.
3. Remove bolt, and disconnect ABS speed sensor. Remove clip and nut. Using separator, separate steering knuckle from lower suspension arm. Remove cotter pin and nut, and using tie rod separator, disconnect tie rod end.
4. Remove 2 nuts, bolts and steering knuckle with axle hub from shock absorber.

Installation

To install, reverse removal procedure. Use NEW snap ring after pressing in NEW wheel bearing. Use NEW cotter pins. Tighten bolts to specifications. See **TORQUE SPECIFICATIONS** .

SHOCK ABSORBER

Removal & Installation

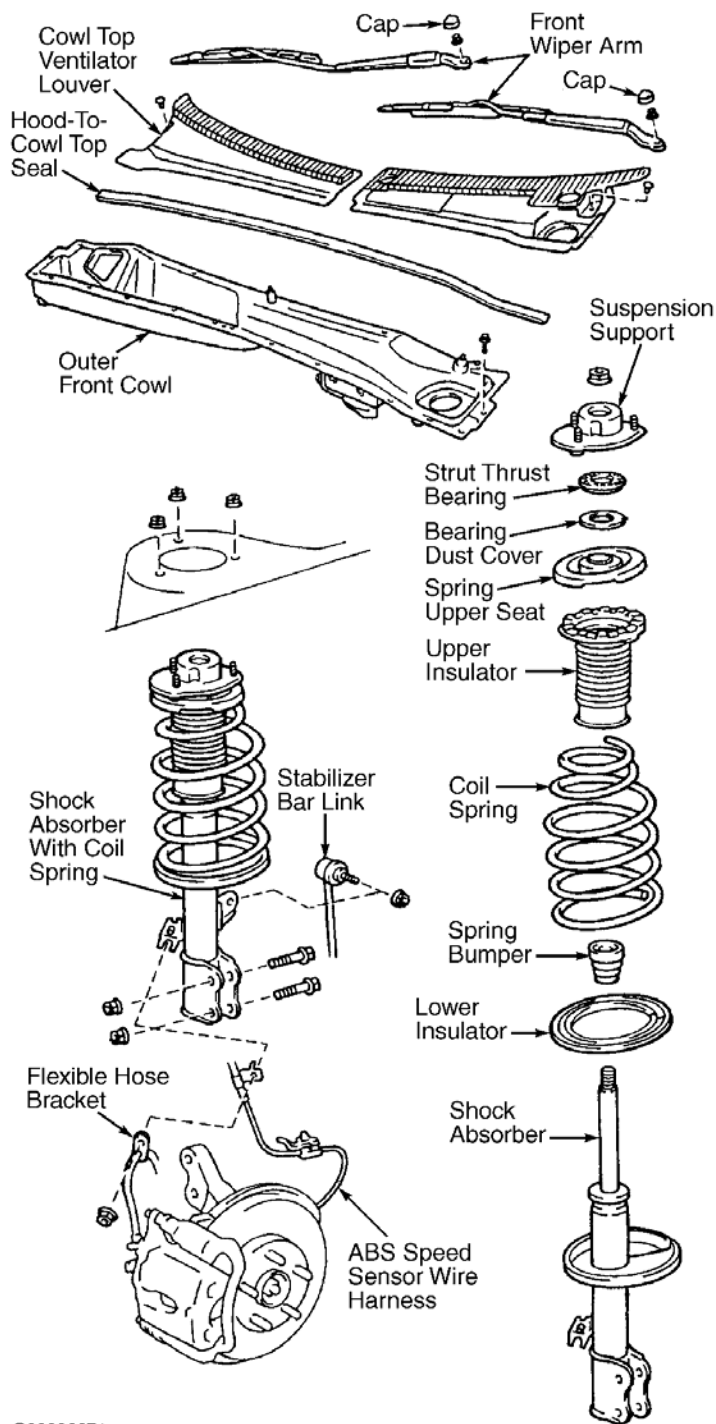
1. Remove front wheel. Disconnect brake hose and ABS speed sensor clamp from shock absorber. On Sienna, remove outer front cowl top panel. See **Fig. 6** .
2. Remove 2 lower shock absorber nuts and bolts and disconnect shock absorber from steering knuckle. Remove 3 upper shock absorber mounting nuts from inside engine compartment and remove shock absorber with coil spring.

NOTE: **On Camry, note mounting position of curved mounting plate on shock absorber tower. Ensure it is reinstalled in same position.**

3. To install, reverse removal procedure. Tighten bolts and nuts to specification. See **TORQUE SPECIFICATIONS** .

1999 Toyota RAV4

1999-2000 SUSPENSION Front - Avalon, Camry, Camry Solara, Celica, Corolla, Echo, RAV4 & Sienna



G00006671

Fig. 6: Exploded View Of Shock Absorber & Cowl Panel Components (Sienna)
Courtesy of TOYOTA MOTOR SALES, U.S.A., INC.

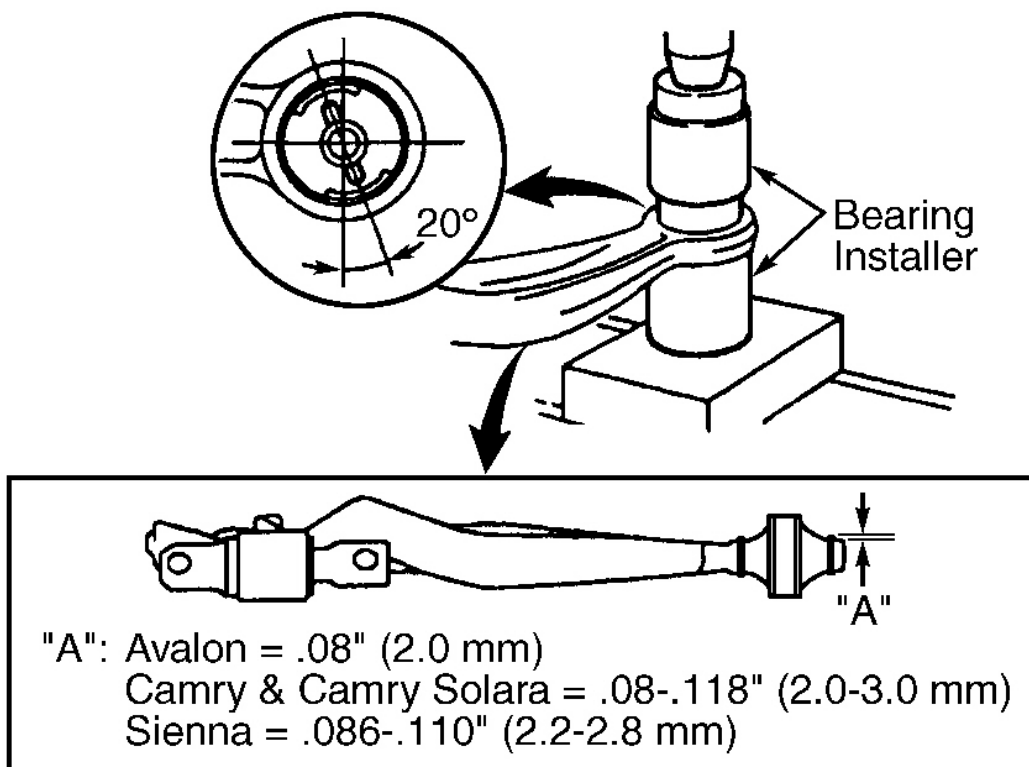
LOWER CONTROL ARM

1999 Toyota RAV4

1999-2000 SUSPENSION Front - Avalon, Camry, Camry Solara, Celica, Corolla, Echo, RAV4 & Sienna

Removal & Installation (Avalon, Camry, Camry Solara & Sienna)

1. Remove front wheel. Remove 2 nuts and bolt, and disconnect lower control arm from lower ball joint. Remove 2 bolts on front side of lower control arm and bolt and nut of rear side of lower control arm. Remove lower control arm.
2. Remove lower control arm bushing stopper from control arm shaft. Bushing can be replaced with a press. If a NEW bushing is installed, note position of installation and amount of protrusion. See **Fig. 7**.
3. To install, reverse removal procedure. Tighten bolts and nuts to specifications. See **TORQUE SPECIFICATIONS**



G00006672

Fig. 7: Installed Position Of Lower Control Arm Bushing (Avalon, Camry Solara & Sienna)

Courtesy of TOYOTA MOTOR SALES, U.S.A., INC.

Removal & Installation (1999 Celica)

1. Remove front wheel. Remove both engine under covers. Remove cotter pin, lock cap and drive shaft lock nut. Using separator tool, disconnect both tie rod ends from steering knuckles.
2. Disconnect both stabilizer bar links from both lower control arms. See **Fig. 4**. See **STABILIZER BAR**. Disconnect both lower suspension arms from lower ball joints. See **BALL JOINTS**

1999 Toyota RAV4

1999-2000 SUSPENSION Front - Avalon, Camry, Camry Solara, Celica, Corolla, Echo, RAV4 & Sienna

3. Remove 6 bolts (3 at each side) holding lower control arms to body. Support transaxle with a jack. Remove 2 exhaust pipe support bracket set bolts in middle of suspension crossmember. Remove 2 grommets and center member set bolt and 2 nuts. Remove 2 power steering gear assembly mounting bolts and nuts. Support suspension crossmember with a jack. Remove 2 upper inner bolts and lower suspension crossmember from vehicle with lower control arms attached. See **Fig. 4** .
4. Remove lower control arm collar. Remove control arm-to-suspension crossmember bolt and remove lower control arm. See **Fig. 4** .
5. To install, reverse removal procedure. Tighten all bolts and nut to specification. See **TORQUE SPECIFICATIONS** .

Removal & Installation (2000 Celica)

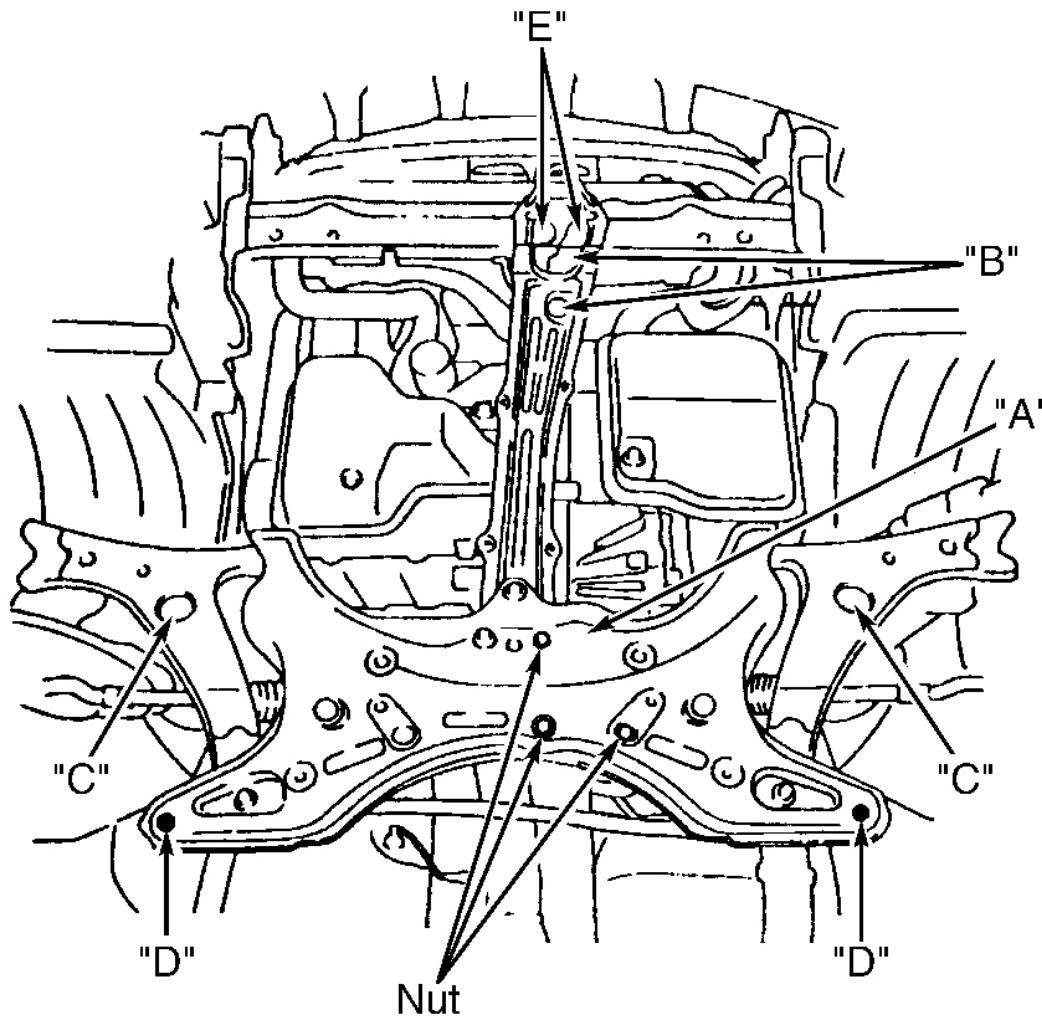
1. Remove front wheel. Remove right side engine cover. Remove bolt and 2 nuts, and disconnect lower suspension arm from lower ball joint. Remove 2 bolts, nut and lower suspension arm.
2. On models with A/T, remove left side engine covers. On all models, remove cotter pin and nut, and disconnect tie rod ends from steering knuckle. Remove nut, and disconnect stabilizer bar link from shock absorber. Remove bolt and 2 nuts, and disconnect lower suspension arm from lower ball joint. Loosen lower suspension arm set bolts.

CAUTION: DO NOT hook engine chain to any other part of vehicle.

3. Remove hood. Disconnect 2 PVC hoses. Install No. 1 and No. 2 engine hangers in correct direction. Attach engine chain hoist to engine hangers.
4. Remove 4 set bolts to disconnect power steering gear assembly from suspension member. Secure power steering gear aside. Remove bolt "A" and 3 nuts. Disconnect engine rear mount. Remove 2 "B" bolts, and disconnect engine front mount. See **Fig. 8** .
5. Using a transmission jack, support suspension member. Remove 6 bolts ("C", "D", and "E"). Lower suspension member. Remove 2 bolts, nut and lower suspension arm.
6. To install, reverse removal procedure. Tighten all bolts and nut to specification. See **TORQUE SPECIFICATIONS** .

1999 Toyota RAV4

1999-2000 SUSPENSION Front - Avalon, Camry, Camry Solara, Celica, Corolla, Echo, RAV4 & Sienna



G00008382

Fig. 8: Location Of Suspension Crossmember Bolts & Nuts (2000 Celica)

Courtesy of TOYOTA MOTOR SALES, U.S.A., INC.

Removal & Installation (Corolla)

1. Remove front wheel. Remove stabilizer bar. See **STABILIZER BAR** . Remove 2 nuts and bolt and disconnect lower control arm from lower ball joint. See **Fig. 9** .
2. On A/T models, remove 3 bolts, lower control arm bracket and lower control arm from right side. On left side, support suspension crossmember. Remove 7 bolts and 4 nuts, and then remove lower control arm bracket and suspension crossmember with lower control arm attached. See **Fig. 10** . Remove lower control arm-to-crossmember bolt on left side.
3. On M/T, remove 6 bolts (3 each side) from lower control arm bracket and lower control arms. See **Fig. 9** .

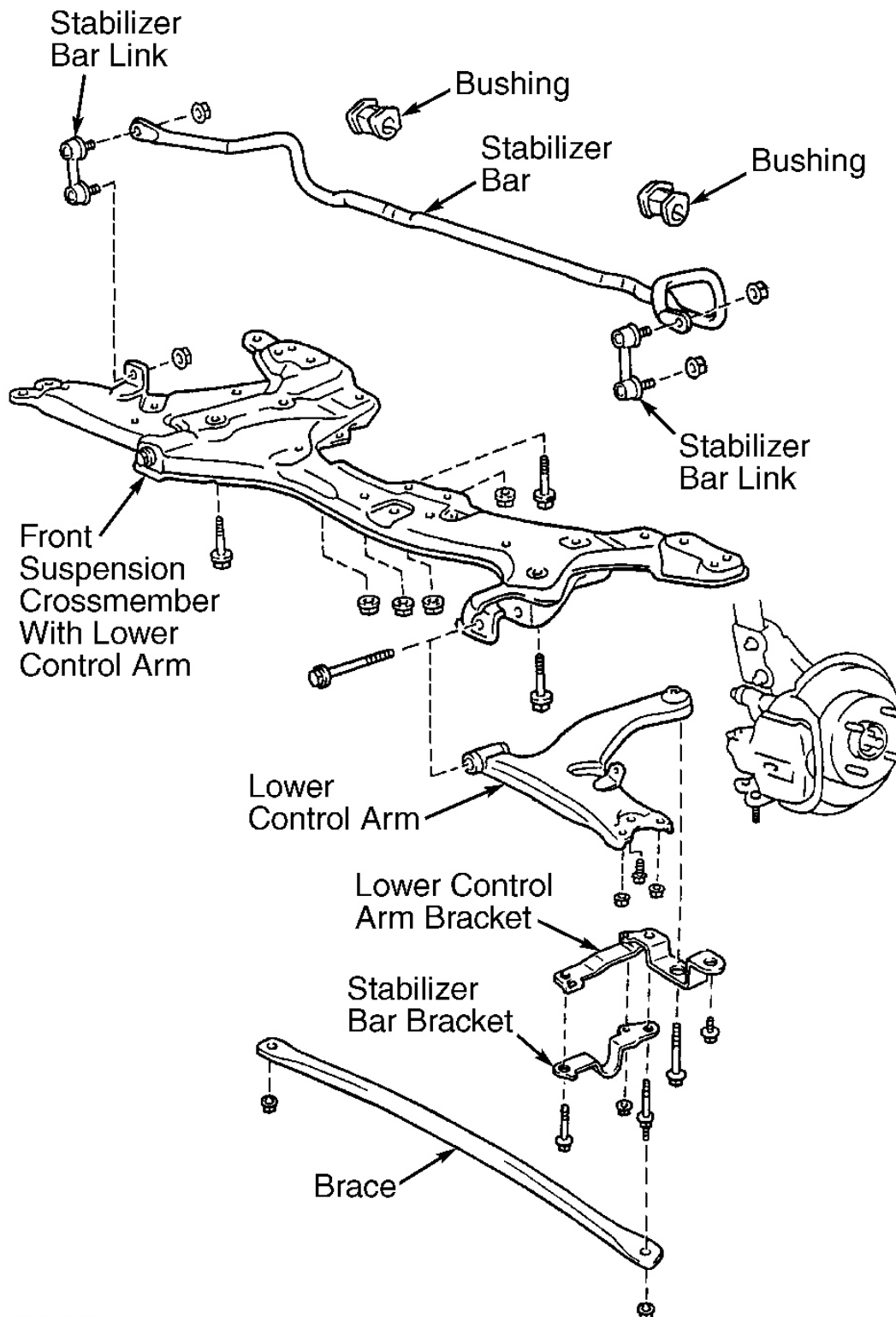
1999 Toyota RAV4

1999-2000 SUSPENSION Front - Avalon, Camry, Camry Solara, Celica, Corolla, Echo, RAV4 & Sienna

4. To install, reverse removal procedure. Tighten all bolts and nut to specification. See **TORQUE SPECIFICATIONS** .

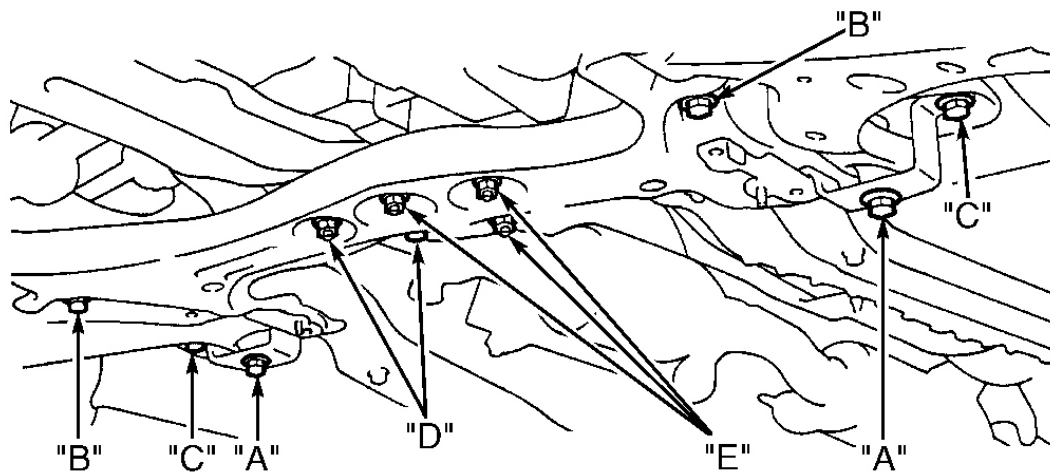
1999 Toyota RAV4

1999-2000 SUSPENSION Front - Avalon, Camry, Camry Solara, Celica, Corolla, Echo, RAV4 & Sienna



G00006674

Fig. 9: Exploded View Of Lower Control Arm & Suspension Crossmember Components (Corolla)
Courtesy of TOYOTA MOTOR SALES, U.S.A., INC.



G00006675

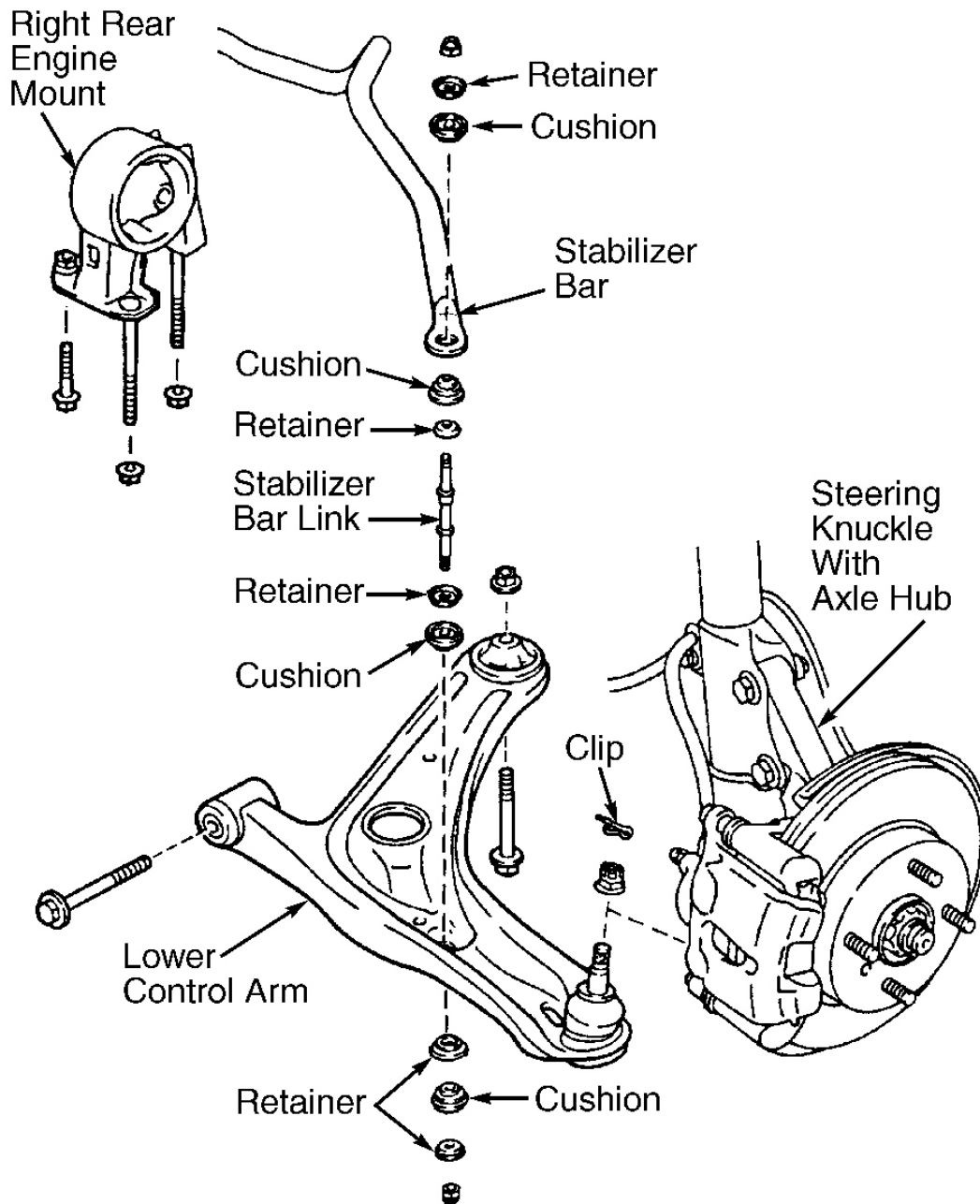
Fig. 10: Location Of Suspension Crossmember Bolts & Nuts (Corolla)
Courtesy of TOYOTA MOTOR SALES, U.S.A., INC.

Removal & Installation (Echo)

1. Remove front wheel. Holding stabilizer bar link, remove 2 nuts, 5 retainers, 4 cushions and stabilizer bar link. Remove clip and nut. Using ball joint puller, disconnect lower suspension arm from steering knuckle.
2. On right side arm, remove bolt and 2 nuts, and disconnect engine rear mount. Using transmission jack and wooden block, slightly raise engine. Remove 2 bolts, nut and lower suspension arm.
3. To install, reverse removal procedure. Tighten all bolts and nut to specification. See **TORQUE SPECIFICATIONS** .

1999 Toyota RAV4

1999-2000 SUSPENSION Front - Avalon, Camry, Camry Solara, Celica, Corolla, Echo, RAV4 & Sienna



G00008386

Fig. 11: Exploded View Of Lower Control Arm (Echo)
Courtesy of TOYOTA MOTOR SALES, U.S.A., INC.

Removal & Installation (RAV4)

1. Remove front wheel. On A/T models, remove left engine under cover, then remove stabilizer bar. See

1999 Toyota RAV4

1999-2000 SUSPENSION Front - Avalon, Camry, Camry Solara, Celica, Corolla, Echo, RAV4 & Sienna

STABILIZER BAR . On all other models, disconnect stabilizer bar link from lower control arm.

2. Disconnect lower control arm from lower ball joint by removing bolt and 2 nuts. Remove nut and 2 bolts and disconnect lower control arm bracket. See **Fig. 12** .
3. On A/T models, remove 2 center member set nuts and disconnect center member from front suspension member. Remove 2 power steering gear assembly mounting bolts and nuts. Remove exhaust pipe No. 1 support bracket from front exhaust pipe. Remove bolt and clamp. Support front suspension crossmember with a jack. Remove 2 bolts and lower suspension crossmember from vehicle, with control arms attached.
4. On all models, remove bolt and remove lower control arm.
5. To install, reverse removal procedure. Tighten bolts and nuts to specification. See **TORQUE SPECIFICATIONS** .

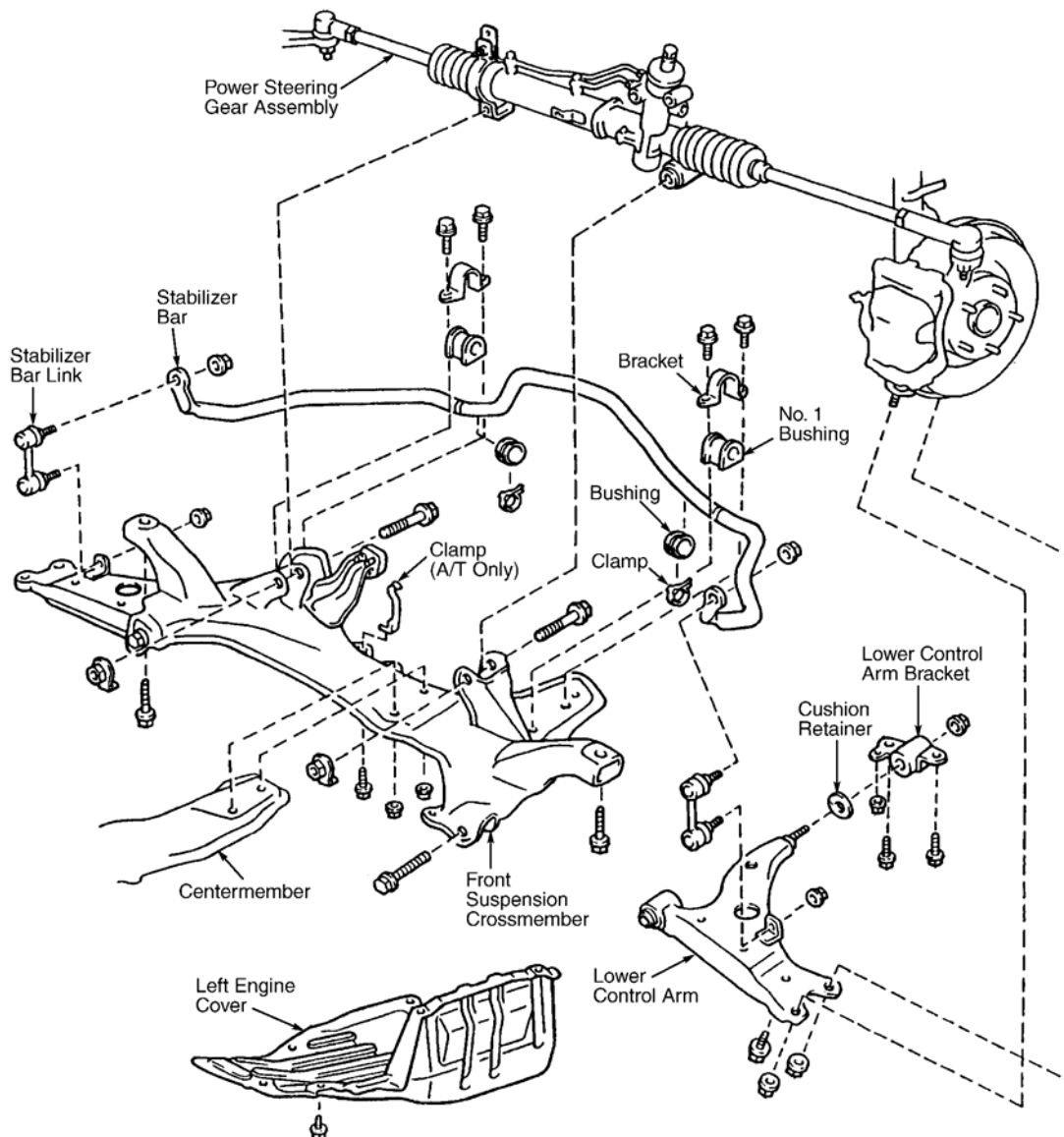


Fig. 12: Exploded View Of Lower Control Arm & Related Components (RAV4)

Courtesy of TOYOTA MOTOR SALES, U.S.A., INC.

BALL JOINTS**Removal & Installation**

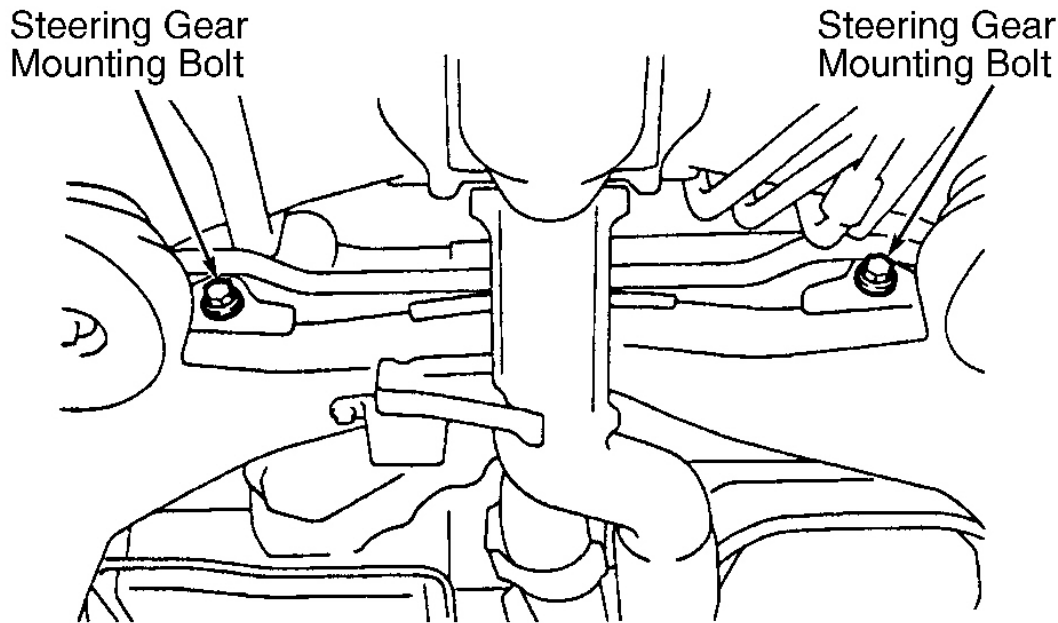
1. Remove steering knuckle with axle hub. See **FRONT AXLE HUB & WHEEL BEARING** . Using screwdriver, pry off dust cover. Remove cotter pin and nut. On all models except Echo, use ball joint removal tool to remove lower ball joint from axle hub assembly. On Echo, lower control arm must be removed and replaced to remove ball joint.
2. To install, reverse removal procedure. Check ball joint turning torque. See **BALL JOINT CHECKING** under ADJUSTMENTS & INSPECTION. Install NEW cotter pin and NEW dust cover.

STABILIZER BAR**Removal & Installation**

1. Remove both front wheels. Remove 4 nuts and remove both stabilizer bar links (2 nuts at each end). On Echo, remove 2 nuts, 5 retainers, 4 cushions and stabilizer bar link. On Echo and Sienna, disconnect both tie rod ends from steering knuckles. On all models, remove left and right stabilizer bar brackets and bushings.
2. On Corolla, remove suspension brace. See **Fig. 10** . On Sienna, remove power steering gear mounting bolts and nuts. See **Fig. 13** . On 2000 Celica, remove front suspension member with lower suspension arm. Remove 2 bolts, bracket and bushing. Install bushing, with cut out facing toward rear, on outside of paint line on stabilizer bar.
3. On Echo, remove clip and nut, and disconnect steering knuckle. Remove hood, and attach engine sling to engine hangers. Remove bolt and 2 nuts, and disconnect rear engine mount. Disconnect sliding yoke and pressure feed and return tubes. Remove bolt, and disconnect tube clamp. Support suspension member with transmission jack. Remove 4 bolts and lower suspension member. Remove 4 bolts, 2 brackets and bushings. On all models, remove stabilizer bar. On Avalon, Camry, Camry Solara, Celica and Sienna, remove stabilizer bar from left side of vehicle. See **Fig. 4** .
4. To install, reverse removal procedure. On Sienna, install stabilizer bar with White colored side on right side and stabilizer bar link with Green colored side on left side. Tighten all bolts and nuts to specification. See **TORQUE SPECIFICATIONS** .

1999 Toyota RAV4

1999-2000 SUSPENSION Front - Avalon, Camry, Camry Solara, Celica, Corolla, Echo, RAV4 & Sienna



G00006677

Fig. 13: Identifying Power Steering Gear Mounting Bolts (Sienna)

Courtesy of TOYOTA MOTOR SALES, U.S.A., INC.

TORQUE SPECIFICATIONS

TORQUE SPECIFICATIONS

Application	Ft. Lbs. (N.m)
ABS Speed Sensor Wire Harness Clamp Bolt	
Avalon, Camry, Camry Solara, Echo & Sienna	22 (30)
Brace Mounting Nuts	
Corolla	51 (69)
Brake Caliper Mounting Bolts-To-Steering Knuckle	
Avalon, Camry, Camry Solara, RAV4 & Sienna	79 (107)
Celica	
1999	76 (103)
2000	79 (107)
Corolla & Echo	65 (88)
Brake Hose Clamp Bolt	
Avalon, Camry, Camry Solara, Corolla & Sienna	22 (30)
Celica & RAV4	14 (19)
Drive Axle Nut	

1999 Toyota RAV4

1999-2000 SUSPENSION Front - Avalon, Camry, Camry Solara, Celica, Corolla, Echo, RAV4 & Sienna

Avalon, Camry, Camry Solara & Sienna	217 (294)
Celica, Echo & RAV4	159 (216)
Corolla	166 (225)
Exhaust Pipe Bracket Bolts	
Celica	14 (19)
Lower Ball Joint-To-Axle Hub Nut	
Avalon, Camry, Camry Solara & Sienna	90 (122)
Celica	76 (103)
Corolla	91 (123)
Echo	72 (98)
RAV4	94 (127)
Lower Control Arm-To-Ball Joint Nuts & Bolt	
Avalon, Camry, Echo & RAV4	94 (127)
Camry Solara & Sienna	90 (122)
Celica	
1999	94 (127)
2000	105 (142)
Corolla	105 (142)
Lower Control Arm Bracket Bolts & Nuts	
Corolla	
Front Bracket-To-Bracket Bolt	167 (226)
Lower Bracket (Rear)-To-Upper Bracket (Center) Bolt	109 (148)
Lower Bracket-To-Upper Bracket Nut	14 (19)
Upper Bracket Center Bolt	129 (175)
Upper Bracket Outer (Short) Bolt	109 (147)
RAV4	
Inner Nut	21 (28)
Mounting Bolts	101 (137)
Rear Nut (To Lower Control Arm)	101 (137)
Lower Control Arm Bushing-To-Body Bolts	
Avalon, Camry, Camry Solara & Sienna	152 (206)
Echo	65 (88)
Lower Control Arm Bushing-To-Suspension Crossmember Bolts	
Celica	
1999	116 (157)
2000	101 (137)
Corolla	158 (214)
Echo	97 (132)
RAV4	126 (171)
Power Steering Gear Mounting Bolts	
Celica	

1999 Toyota RAV4

1999-2000 SUSPENSION Front - Avalon, Camry, Camry Solara, Celica, Corolla, Echo, RAV4 & Sienna

	94 (127)
2000	33 (45)
RAV4	83 (113)
Sienna	134 (182)
Shock Absorber Center Nut	
Avalon, Camry, Camry Solara & Sienna	36 (49)
Celica, Corolla, RAV4	35 (47)
Echo	24 (33)
Shock Absorber Lower Nuts	
Avalon & Camry	156 (212)
Camry Solara	162 (220)
Celica	113 (153)
Corolla	203 (274)
Echo	97 (132)
RAV4	117 (159)
Sienna	155 (210)
Shock Absorber Upper Nuts	
Avalon, Camry, Camry Solara, RAV4 & Sienna	59 (80)
Celica	
1999	59 (80)
2000	29 (39)
Corolla & Echo	29 (39)
Stabilizer Bar Bracket Bolts	
Avalon, Camry, Camry Solara, Celica & Sienna	14 (19)
RAV4	22 (29)
Stabilizer Bar Link Nuts	
Avalon, Camry, Camry Solara & Sienna	29 (39)
Celica & Corolla	33 (45)
Echo	13 (18)
RAV4	
2-Door Model	33 (45)
All Other Models	54 (73)
Suspension Crossmember Mounting Bolts	
Celica	
1999	
Outer Center	94 (127)
Outer Rear (Long)	123 (167)
Outer Rear (Short)	130 (176)
2000 ⁽¹⁾	
"A"	33 (45)
"B"	

1999 Toyota RAV4

1999-2000 SUSPENSION Front - Avalon, Camry, Camry Solara, Celica, Corolla, Echo, RAV4 & Sienna

	38 (52)
"C"	83 (113)
"D"	116 (157)
"E"	29 (39)
Corolla ⁽²⁾	
Front Bolts ("B")	167 (226)
Rear Bolts ("D")	45 (61)
Center Nuts ("E")	42 (57)
Outer End Bolts ("C")	109 (148)
Outer Rear Bolts ("A")	129 (175)
RAV4	
Outer	152 (206)
Suspension Crossmember-To-Center Member Bolt & Nuts	
Celica	59 (80)
RAV4 (Nuts)	85 (115)
Tie Rod End Nut	36 (49)
INCH Lbs. (N.m)	
ABS Speed Sensor Bolt	
Avalon, Camry, Camry Solara, & Corolla	71 (8.0)
Celica	
1999	44 (5.0)
2000	71 (8.0)
Sienna	69 (7.8)
ABS Speed Sensor Wire Harness Clamp Bolt	
Celica	
1999	44 (5.0)
2000	71 (8.0)
RAV4	48 (5.4)
Axle Hub Dust Cover Bolts	74 (8.3)
Front Suspension Clamp (A/T Only)	
RAV4	74 (8.3)
(1) See Fig. 8 .	
(2) See Fig. 10 .	